

US40

US40

Ø 43 - 219 mm (1.693" - 8.622")



DESCRIPTION :

The portable US40 portable tube and pipe beveling machine is powerful, robust, reliable and versatile.

The US40 covers diameters ranging from 43 mm (1,693") ID to 219 mm (8,622") OD. The standard tool plate will accept multiple tool bits, allowing up to 4 simultaneous machining operations which may include 30°, 37°30, 45° bevels with or without land, J-bevels, compound bevels, facing, counterboring works, removal and/or lengthening of weld joints on boiler panels.

The tool bits can be changed and adjusted very quickly. Carbide tool inserts can alternatively be used.

The US40 features a self-accepting torque system and an integral drive motor. It can be either pneumatically or electrically or hydraulically driven.

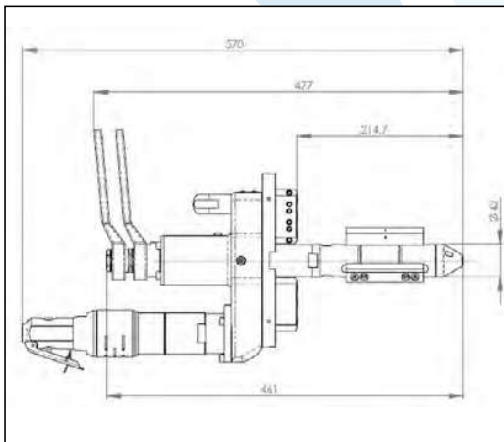
The PROTEM US40 will perform repeatable high quality weld preparations on all types of materials including mild, chrome, stainless steel, duplex, super duplex, copper-nickel alloy steel, inconel, P91, aluminium, copper and exotic alloys.



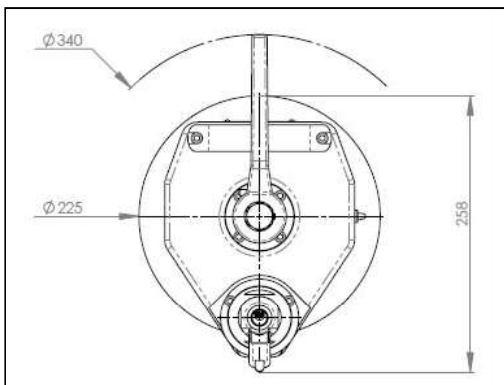
US40 with pneumatic drive

Beveling	Cutting	Facing	Counterboring	Surfacing
✓	✗	✓	✓	✗

DIMENSIONS VIEW 1 :



DIMENSIONS VIEW 2 :



TECHNICAL FEATURES

Machine	US40
Machining Capacity	Standard model:
	43 mm (1.693") ID
	219 mm (8.622") OD
	With options:
	43 mm (1.693") ID
	400 mm (15.748") OD
Specific shapes & angles	Facing, 30°, 37°30, 45° bevel, counterbore, J-bevel, others on request
Clamping	Manual with ratchet
Feed stroke	50 mm (1.969")
Expansion	16 mm (0.630")
Cutting head gear drive	25 rpm off-load speed, 16 rpm nominal speed (Approximate rotation speed according to air pressure and air flow)
Pneumatic drive	730 W, 6 bar (87 psi), 1400 l/min (49 cfm)
Electric drive	1050 W, 230 V or 110 V
<i>Pneumatic driven machines have to be used with a lubricating filter. Recommended option: regulation valve.</i>	

OD MOUNT MACHINING

US40

ORDER NO.	DESCRIPTION
US40	US40 with pneumatic drive 730 W, weight ~ 14,0 kg/ 30,9 lbs
US40E	US40 with electric drive 1200 W, weight ~ 15,0 kg/ 33,1 lbs
US40CA	US40CA with pneumatic drive and automatic clamping, weight ~ 15,0 kg/ 33,1 lbs
US40HY	US40 with hydraulic drive (without control valve), weight ~ 21 kg/ 46,3 lbs
US40HY-SDV	US40 with hydraulic drive (with control valve), weight ~ 21 kg/ 46,3 lbs
US40CH	US40CH Pipe beveling machine for boilers works for 43-120 mm

US40E



US40 SUR SITE :



APPLICATIONS :



OD MOUNT MACHINING

OPTIONS :

ORDER NO.	DESCRIPTION
US40-IDT	ID-Tracker: enables the US40 to maintain a constant root land thickness independently of the pipe ovality or wall thickness variations. With the inside profile tracker option the machining capacity is limited. For any question, please contact PROTEM Commercial Department
US40-PO-36	US40-PO-36 additional tool holder
US40-KS.S1	US40-KS.S1 Cam for simple bevel
O-US-SO-11040	O-US-SO-11040 Tool insert holder 20° - root lip 2 mm
O-US-SO-11053	O-US-SO-11053 Tool insert holder 5°
US40-ASB	Flange facing attachment, for flange diameters ranging from 70 mm ID up to 400 mm OD (2,756" - 15,748")
US40-KS65 :	Copying carriage
US40-KS.S	Cam for compound bevel and compatible with copying carriage
US40-OPT5	Machine support
US40-PO-10"	Tool holder for diameter up to 273 mm (10") OD



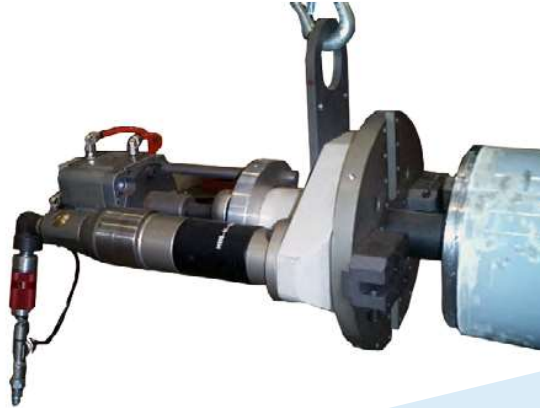
US40CA

US40CA

Ø 43 - 219 mm (1.693" - 8.622")



DESCRIPTION :

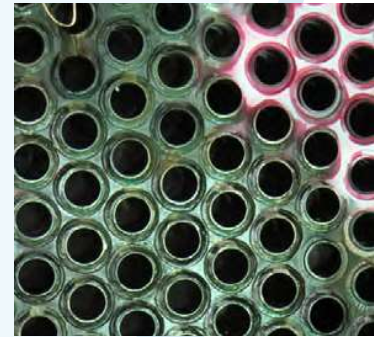


US40CA with pneumatic

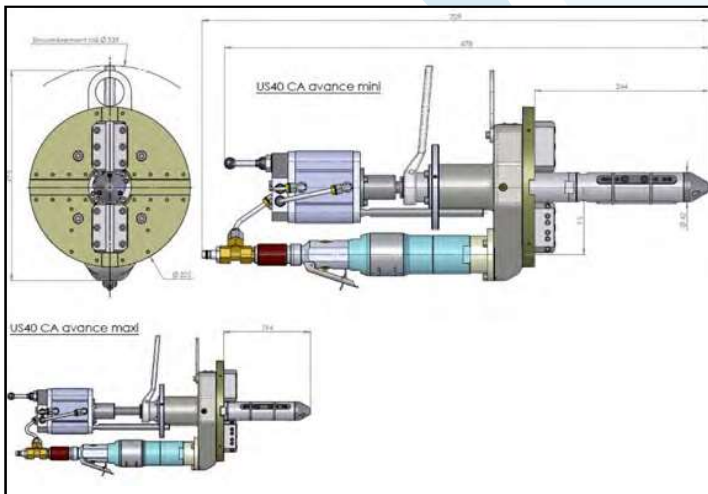
ORDER NO.	DESCRIPTION
US40CA	US40CA with pneumatic drive and automatic clamping, weight ~ 15,0 kg/ 33,1 lbs

Beveling	Cutting	Facing	Counterboring	Surfacing
✓	✗	✓	✓	✗

US40CA ON-SITE :



DIMENSIONS :



TECHNICAL FEATURES

Machine	US40CA
Machining Capacity	43 mm (1.693") ID
	219 mm (8.622") OD
Specific shapes & angles	Facing, 30°, 37°30', 45° bevel, counterbore, J-bevel, others on request
Clamping	Manual with key
Feed stroke	16 mm (0.630")
Cutting head gear drive	25 rpm off-load speed 16 rpm nominal speed
Pneumatic drive	730 W, 6 bar (87 psi) 1400 l/min (49 cfm)
Weight	≈ 15 kg (33.1 lbs)

Pneumatic driven machines have to be used with a lubricating filter. Recommended option: regulation valve.

OD MOUNT MACHINING